

Stainless Steel Pumps

FEATURING

MANIFOLD: High strength 316L Stainless Steel to insure long term use.

BOLTS: 304L stainless steel.

PLUNGERS: A special ultra thick solid ceramic for long life, strong durability and more resilience.

CRANKCASE: Precision die-cast, large cooling fins and special anticorrosion finish. Both side and rear cover sight glass.

BEARINGS: Premium SKF tapered roller bearings that provide extra load support, smoother and lower crankcase running temperatures and over all extended pump life.

VALVES, SEATS, AND SPRINGS: Stainless steel with specially designed cages to provide seating and extended valve life.

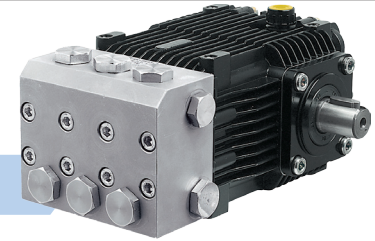
SEALS AND V-PACKINGS: Viton are continuously lubricating for extended life. SPL plunger retainers.

OIL SEALS: Triple lipped and spring loaded for greater durability and extended life..

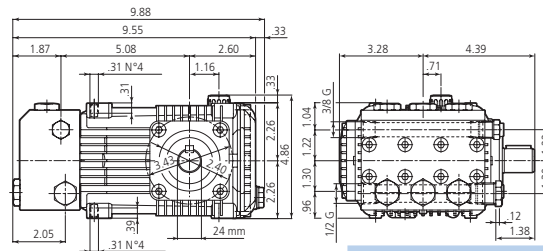
PLUNGER RODS: High strength stainless steel.

CONNECTING RODS: One piece special alloy bronze for higher pressures, oversized for maximum strength, load disbursement, and long life. Heavy pin area construction.

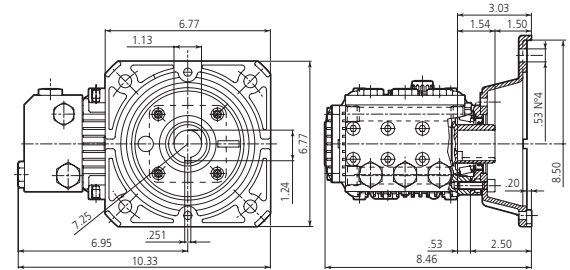
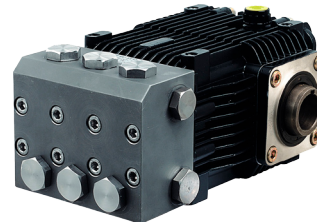
DIMENSIONS



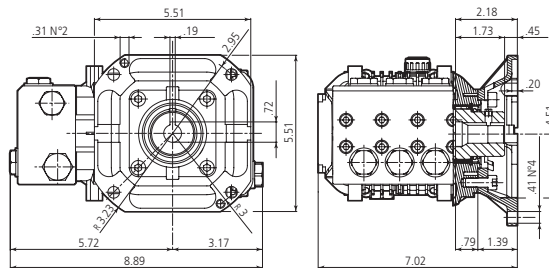
RKA-SS N version
Solid shaft pump ø 24 mm



RKA-SS E version + F17
Hollow shaft pump ø 1" 1/8



RKA-SS E version + F33
Hollow shaft pump ø 5/8"



SPECIFICATIONS

MODEL	MAX GPM	MAX LMP	MAX PSI	MAX BAR	POWER EBHP	BORE DIA MM	STROKE MM	CRANKSHAFT ID STAMP	WEIGHT LBS.
RKA-SS2.3G15N	2.3	8.7	1500	103	2.5	18	7.0	8	22
RKA-SS3G15N	3	11.4	1500	103	3.0	18	9.8	6	22
RKA-SS3.6G12N	3.6	13.6	1500	103	3.0	18	11.2	10	22
RKA-SS2.3G15E-F17	2.3	8.7	1500	103	2.4	18	7.0	8	22
RKA-SS3G15E-F17	3	11.4	1500	103	3.0	18	9.8	6	22
RKA-SS3.6G12E-F17	3.6	13.6	1500	103	3.0	18	11.2	10	22
RIKA-SS4.2G15E-F17	4.2	15.9	1500	103	4.3	18	12.0	4	22
RKA-SS2.3G15E-F33	2.3	8.7	1500	103	2.4	18	7.0	8	22
RKA-SS3G15E-F33	3	11.4	1500	103	3.0	18	9.8	6	22
RKA-SS3.6G12E-F33	3.6	13.6	1500	103	3.0	18	11.2	10	22
RIKA-SS4.2G15E-F33	4.2	15.9	1500	103	4.3	18	12.0	4	22

Oil Capacity = 15.3 oz

Maximum Fluid Temperature = 140° F

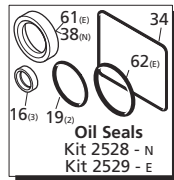
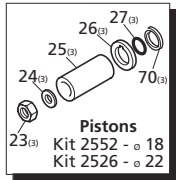
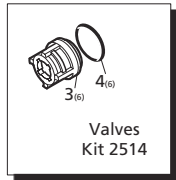
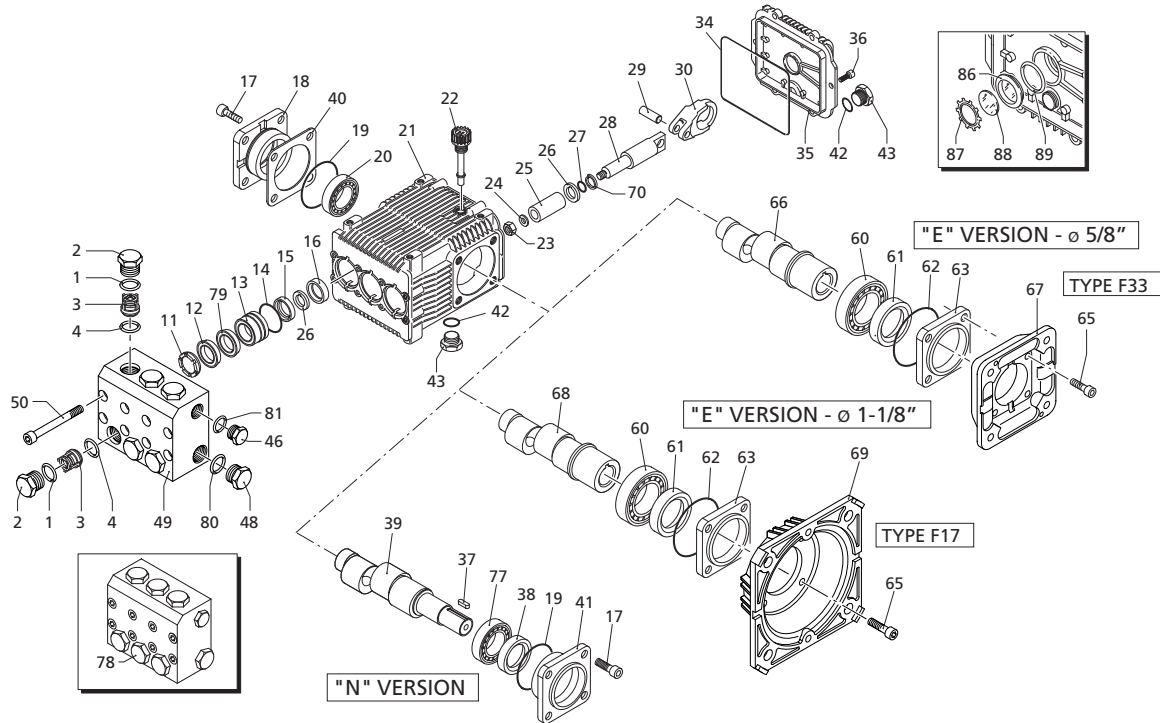
Inlet Thread = 1/2" F

Discharge Thread = 3/8" F

Torque Specifications Inch pounds (ft. lbs)

HEAD	PISTON NUT	REAR COVER	SIDE COVER	VALVE CAP	CON RODS
177 (15)	89 (7.5)	62 (5.2)	177 (15)	442 (37)	N/A

SPECIAL NOTE: Use AR64516 Oil. First change oil after 50 hours of use. Then every 500 hours. This oil is specially formulated to provide correct lubrication properties for our pumps. **No** other oil is factory approved for these pumps.



Special Parts / Kits

Code	Description	Qty.
1837	Rail kit 5/8" - 2 Rails - 4 Bolts	(N only) 1
2633	Rail kit 1-3/4" - 2 Rails - 4 Bolts	(N only) 1
2633H	Rail kit 2-5/8" - 2 Rails - 4 Bolts	(N only) 1

Pos	Code	Description	Qty.	Pos	Code	Description	Qty.	Pos	Code	Description	Qty.
1	960161	O-Ring ø17.86x2.62	6	33	2280490	Crankshaft 24mm	1	78	2349200	Complete pump head NPT	1
2	2340030	Valve cap (478 in/lbs)	6	34	2280790	Crankshaft 24mm	1	79	2349202	Complete pump head G	1
3	960850T	Valve cap 1/4" threaded - SS (478 in/lbs)	1	35	2280500	Crankshaft 24mm	1	80	2349203	Complete pump head G	1
4	2349050	Complete valve	6	36	2280090	Crankshaft 24mm	1	81	2340310	Back-up ring	3
11	880831	O-Ring ø15.54x2.62	6	37	2280060	Crankshaft 24mm	1	82	2340330	Back-up ring	3
12	960110	Support ring	3	38	1382810	Shim 0.05 mm	1-3	83	180102	O-Ring ø17.5x2 G	1
13	840320	Support ring	3	39	1380120	Shim 0.10 mm	1-3	84	740291	O-Ring ø14x1.78 G	1
14	880321	High pressure packing	3	40	1380130	Shim 0.20 mm	1-3	85	1260250	Oil sight glass	1
15	840331	High pressure packing	3	41	1380530	Shim 0.25 mm	1-3	86	1260430	Snap ring	1
16	2340140	Front piston guide	3	42	2340280	Open bearing support (217 in/lbs)	1	87	1780690	Contrast disc	1
17	2340160	Front piston guide	3	43	740290	O-Ring ø14x1.78	2	88	1140450	O-Ring ø20.24x2.62	1
18	961241	O-Ring ø31.47x1.78	3	44	2340350	Plug 3/8" G	2		AR64516	Oil	1
19	880331	Low pressure seal	3	45	2340050	Plug 3/8" NPT	1		OIL CAPACITY - 15 OZ		
20	840341	Low pressure seal	3	46	2340350	Plug 3/8" G	1		Legend		
21	1383130	Oil seal	3	47	2340040	Plug 1/2" NPT	1	ø 18	ø 18	ø 18	ø 18
22	2340240	Bolt M8x16 (217 in/lbs)	8	48	2340360	Plug 1/2" G	1	For ○	For ●	For □	For ■
23	2349011	Side cover w/sight glass	1	49	2340370	Pump head G	1	RKA-SS	RKA-SS	RKA-SS	RKA-SS
24	640030	O-Ring ø59.99x2.62	2	50	2340340	Pump head G	1	2.3G15	3G15	3.6G12	4.2G15
25	2280240	Bearing	1	51	1383440	Head bolt M8x70 (217 in/lbs)	8				
26	2340260	Pump housing	1	52	1380320	Bearing	1	ø 22			
27	880130	Oil cap	1	53	621170	Oil seal	1	For ▼			
28	2340060	Nut (106 in/lbs)	3	54	621170	Oil seal	1	RKA-SS			
29	2340200	Washer	3	55	1380220	O-Ring ø72.75x1.78	1	7G22 (N only)			
30	1383230	Ceramic piston	3	56	2340300	Shaft cover	1				
31	1383340	Ceramic piston	3	57	620610	Bolt M8x30	4				
32	2340110	Rear piston guide	3	58	2280220	Hollow shaft ø5/8"	1				
33	2340130	Rear piston guide	3	59	2280210	Hollow shaft ø5/8"	1				
34	480482	O-Ring ø4.48x1.78	3	60	2280520	Hollow shaft ø5/8"	1				
35	2340070	Guiding piston	3	61	2280530	Hollow shaft ø5/8"	1				
36	1380060	Piston pin	3	62	1780910	Flange F33	1				
37	1383020	Con rod - Bronze	3	63	2280540	Hollow shaft ø1-1/8"	1				
38	1780510	O-Ring ø106x3	1	64	2280800	Hollow shaft ø1-1/8"	1				
	2349010	Complete rear cover	1	65	2280550	Hollow shaft ø1-1/8"	1				
	2340250	Bolt M6x14 (89 in/lbs)	6	66	2280200	Hollow shaft ø1-1/8"	1				
	1380520	Key	1	67	1591	Flange F17	1				
	180340	Oil seal	1	68	70	2340190	Ring	3			
				69	77	840370	Bearing	1			

