

components and accessories for high pressure cleaners and car wash industry

USER MANUAL

“DELUXE” TELESCOPING LANCE ASSEMBLY



Products

Part #	Length	Inlet	Outlet
27.0080	18'	3/8" Plug	1/4" QC F
27.0082	24'	3/8" Plug	1/4" QC F

The product come supplied with:

- Non Molded Extension Wand M22 Male Inlet x 1/4" Quick Coupler Outlet

Product's use

- *Use fresh and clear water, with common detergents.*
- *We also recommend that any impure fluid be adequately filtered before it is used.*
- *Use the correct size nozzle for the flow and pressure of the unit the lance is being installed on and with the trigger pulled carefully adjust the unloader to obtain the correct working pressure. This will avoid dangerous pressure spikes in the system.*
- *The product will allow for the use of hot water (see Technical Chart). Check that the lance is compatible with the system's functioning data in order to not exceed the maximum values of pressure and temperature.*
- *Fits gas and electric pressure washer rated up to 4000 PSI.*

Warnings and cautions

- *Beware of overhead power lines. Contacting these lines may result in electrocution, injury, or even death.*
- *Always shut down pressure washer / water supply and depressurize before removing or cleaning accessories.*
- *Wear Safety glasses when operating unit.*
- *Never point lance at humans or animals. Never place any body part in the water stream.*
- *Serious injury can result from the high pressure discharge produced by pressure washers.*
- *To prevent accidental discharge from the gun always use the trigger lock when you've finished spraying.*
- *Make sure all connections are secure. Hold the gun securely while starting pressure washer unit.*
- *When operating pressure washer always stand on a solid stable surface. Do not stand on ladders, chairs, etc.*
- *Before changing out tips, make sure the pressure washer has been turned off and depressurized. The collar on the quick disconnect socket will snap back into its original forward locking position when tip is inserted correctly.*
- *Do not fully extend the telescoping wand. A minimum of 6 inches must remain inside each section of the wand for stability.*

Instructions for use

- **TO ADJUST WAND LENGTH**
Press yellow button on blue connections and then pull to extend to desired length. Release yellow button to fix the position being sure that the internal pin is completely seated into one of the holes on the aluminum sections.
- **TO CONNECT THE NON MOLDED EXTENSION WAND**
Insert M22 Male plug on the inlet of the Non Molded extension into the M22 Female coupler located on the outlet of the aluminum extension. Tighten the M22 Female coupler until the connection is fully secure.

Technical chart

Code	Lenght	Max Pressure	Max Flow	Max Temperature	Inlet	Outlet
27.0080	18'	4000psi	10.5 USgpm	275°F *	3/8" Plug	1/4" QC F
27.0082	24'	4000 psi	10.5 USgpm	275°F *	3/8" Plug	1/4" QC F

* The lance has been designed and tested to work properly with liquids at 195°F, but for a short periods of time temperatures of up to 275°F can be used.

Care and maintenance

Before proceeding to the maintenance and the storage of the product, shut off the pressure washer and close the water supply. Depressurize by squeezing the gun trigger until all of the water has been drained out of the unit. Accessories can now be disconnected safely for storage in a cool, dark area. Always clean before storing.

Service must be done exclusively by skilled workers using only original MTM Hydro's spare parts. The Manufacturer is not responsible or liable for any loss or damage arising from improper service or service done by unskilled workers.

Troubleshooting

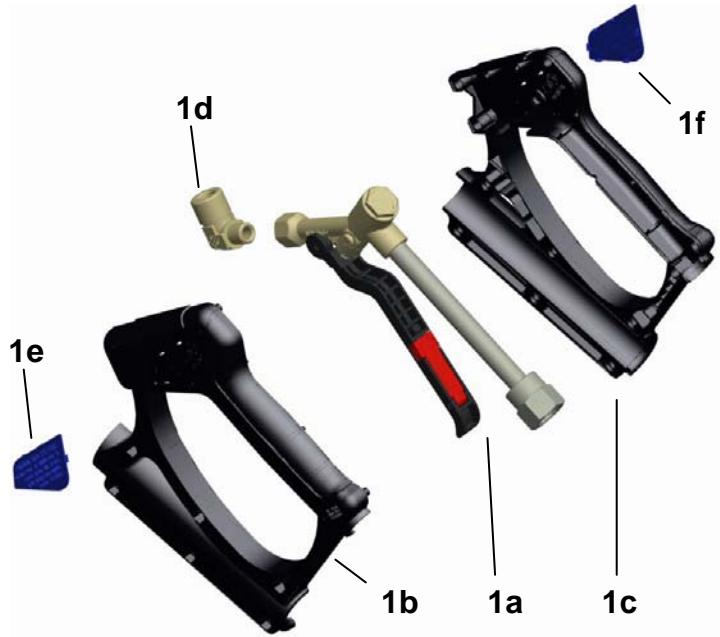
problem	possible cause	corrective action
Connections leak	Loose connections	Retighten fittings
	Sealant worn	Reapply pipe tape
	O-ring is worn	Replace o-ring
Unit won't spray	Unit power / water supply off	Consult owners manual
	Unit is clogged	Reverse flush unit with water

Further instructions

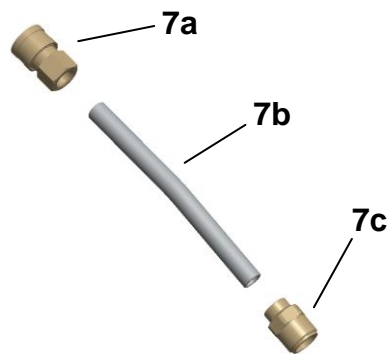
- To correctly install, use, and service this product, carefully read and follow the instructions and warnings contained in this manual.
- Service must be done exclusively by skilled workers.
- Any improper use of or alteration of this product may cause loss or injury. **The Manufacturer is not responsible or liable for any loss, damage, or injury arising from improper use or alteration and declines all liability for its functioning and safety.**



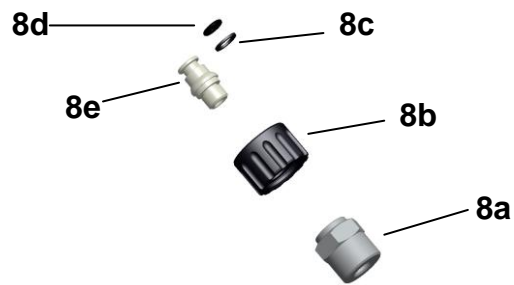
Pos.	Part #	Description
1	41.0385	COMPLETE GUN ASSEMBLY
2	24.0076	3/8" PLATED QC PLUG
3	39.1178	SPONGE GRIP
4	27.0108	18' ALUMINIUM POLES
4	27.0109	24' ALUMINIUM POLES
5	41.0609	SNAP COLLARS REPLACEMENT KIT
6	24.0578	3/4" F ALUMINIUM ADAPTOR
7	27.0089	LANCE EXTENSION
8	24.0500	SCREW QUICK COUPLING M22X1.5F - 1/2"M
9	30.0159	18' 5/16" HOSE ASSEMBLY 1/2" MPT - 1/2" MPT
9	30.0160	24' 5/16" HOSE ASSEMBLY 1/2" MPT - 1/2" MPT



Pos.	Part #	Description
1a	10.0360	SG35 GUN MECHANICS ASSEMBLY
1b	37.0473	LEFT PLASTIC GUN SHELL
1c	37.0472	RIGHT PLASTIC GUN SHELL
1d	24.0276	BRASS ELBOW 1/4" M - F
1e	37.0466	LEFT PLASTIC INSERT (WARNING)
1f	27.0089	RIGHT PLASTIC INSERT (TECHNICAL DATA)



Pos.	Part #	Description
7a	24.0067	BRASS QC SOCKET 1/4" FPT
7b	28.0312	1/4" PLATED PIPE
7c	24.0090	SCREW QUICK COUPLING M22X1.5M - 1/4" FTP



Pos.	Part #	Description
8a	24.0579	ALUMINIUM NIPPLE 1/4"FTP - 1/4"M
8b	24.0249	RING NUT M22X1.5F
8c	39.0070	BACK-UP RING SR110
8d	39.0018	O-RING 109
8e	36.0874	S.STEEL STEM 1/4" - 14MM

The component described here complies with the rules and the lines in force that you can find in the manufacturer's CONFORMITY DECLARATION.

The manufacturer declines all responsibility and liability in the case that the compliance and regulations stated in this manual are not followed or respected.

The manufacturer reserves the right to make any modification to both products and manuals without notice.
